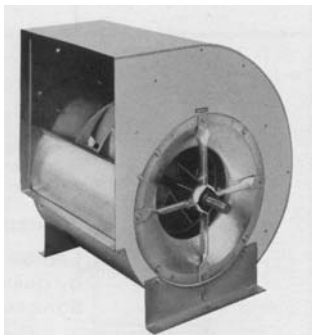
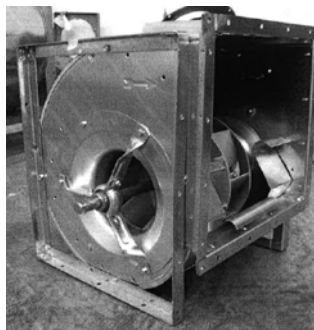


THLZ

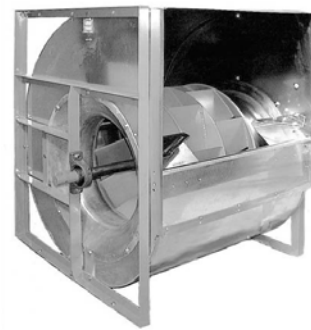
**DOUBLE WIDE DOUBLE INLET HOUSED FAN
BACKWARD INCLINE
FIBERGLASS REINFORCED POLYAMIDE WHEEL (FRP)**



**B - BASIC VERSION NO
FRAME SPIDER BRACKET
BEARING (OPTIONAL FEET)**



**R - BENT STEEL GALVANIZED
FRAME AND SPIDER BRACKET
BEARINGS**



**T - STRUCTURAL STEEL
FRAME WITH PILLOW BLOCK
BEARINGS**



comefri

comefri Radial Fans

THLZ Housed Fans – DWDI

THLZ radial fans have been designed specifically for heating, ventilation and air conditioning units. They offer the following advantages to the unit manufacturer:

- Compact design for space saving installations
- High efficiency operation for economic running costs
- Low operational noise levels and vibration free running
- Wide volume range and high pressure development
- Flexible applications and temperature range of -22°F to +176°F
- Standardized components sized in accordance with R20 DIN 323
- Superb quality
- Short delivery from stock warehouses
- Budget prices

1. Fan Construction



1.1 Casings

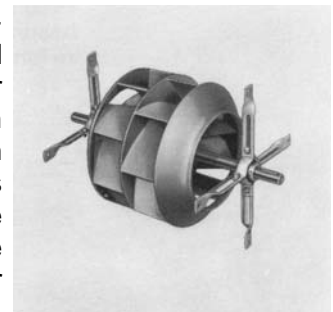
All fan casings are manufactured from high quality galvanized steel. The casings are manufactured with Pittsburgh seams as described above. This system gives great strength as well as ensuring leak proof joints. Predrilled holes are located in the side plates to take either feet or frames as accessories. These are supplied extra.

1.2 Fan Inlets

To ensure high efficiency, fans are supplied with aerodynamically shaped fan inlets. The inlet cones are separate pieces, bolted to the sideplate.

1.3 Impellers

THLZ fans are supplied with high efficiency non-overloading impellers having backward curved blades. The blade shape results from research at our test laboratory and is specially designed to give high volume and pressure characteristics at high efficiency. The Impellers are manufactured of glass reinforced polyamide material. Fan impellers are statically and dynamically balanced, in accordance with VDI 2060 and ISO 1940/1, grade G 6,3. Impeller diameters are in series R20 according to DIN 323.



1.4 Shafts

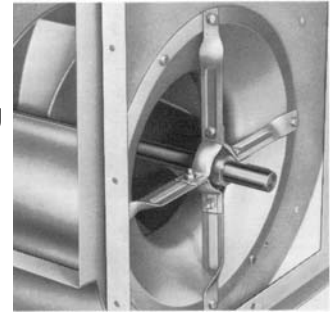
Shafts are manufactured from high quality steel, keyed at both ends and at the impeller location point.

1.5 Bearings

All fans are supplied as standard with pre-greased ball bearings. These are always inspected prior to assembly to ensure quiet running. Bearings have an L₁₀ life of 20,000 HRS at peak performance. Limiting values for speed and power are indicated on the characteristic curves and should not be exceeded. Pulleys should be mounted close to the fan bearing. The various bearing types are described as follows.

Series THLZ "B" and "R"

Sealed-for-life bearings are located in formed support arms made from galvanized steel. The bearing is mounted inside a unique rubber anti-vibration housing which provides for sound insulation and smooth running.



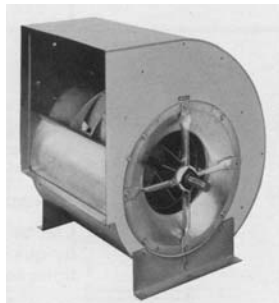
Series THLZ "T"

Pillow blocks containing self aligning ball bearings are used in this range. The bearing being mounted onto the substantial fan frame (Pic 10).



2. Accessories

All fans can be supplied with the following accessories (sold separately):

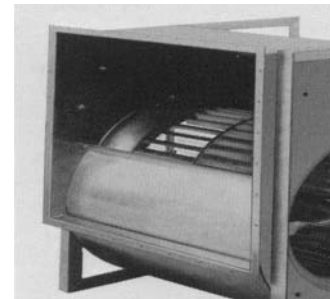


2.1 Feet ...F

Manufactured from galvanized sheet steel. The housing and the feet are predrilled for any discharge orientation.

2.2 Outlet Flanges ...A

Manufactured from galvanized steel and drilled per the dimension sheets (section 5.0).



2.3 Inspection door

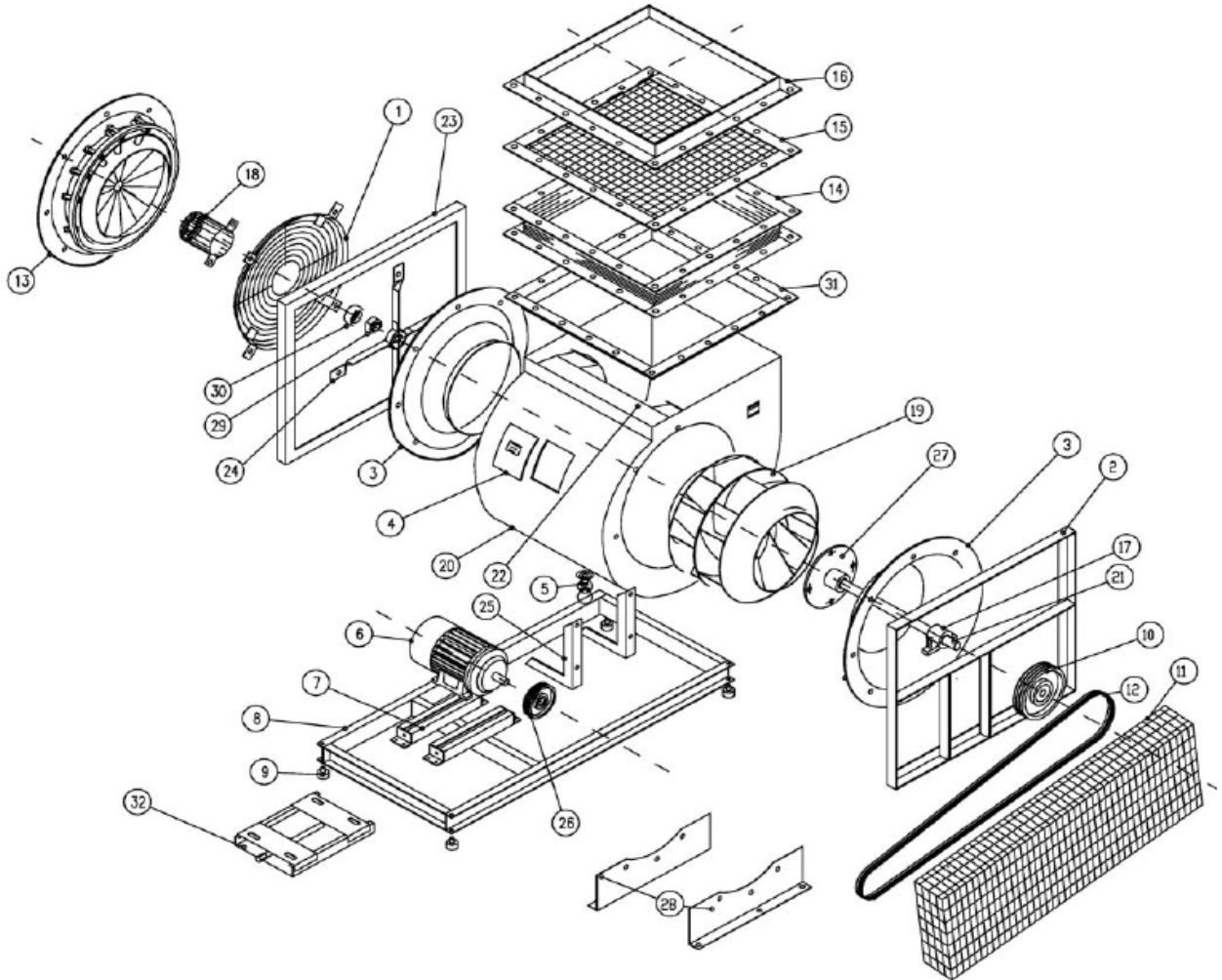
Can be fitted to the fan casing and consist in a galvanized steel plate fixed by quick release screws. Gaskets prevent leakage. See section 6.0 for defining position of installation.

2.4 Drain Plugs

Can be fitted at lowest point of the fan casing to drain condensation. Plugs are 3/8" gas thread. See section 6.0 for defining position of installation.



THLZ - EXPLODED ILLUSTRATION VERSIONS AND ACCESSORIES



1 - INLET GUARD	17 - BEARING
2 - T FRAME	18 - SHAFT GUARD
3 - INLET CONE	19 - WHEEL
4 - INSPECTION DOOR	20 - HOUSING
5 - DRAIN PLUG	21 - SHAFT
6 - MOTOR	22 - CUT OFF
7 - MOTOR RAILS	23 - R FRAME
8 - BASE FRAME	24 - BEARING BRACKET
9 - ANTIVIBRATION MOUNTING	25 - GUARD MOUNT
10 - FAN PULLEY	26 - MOTOR PULLEY
11 - BELT GUARD	27 - HUB
12 - BELTS	28 - FEET
13 - INLET VANE CONTROL	29 - BEARING
14 - OUTLET FLEXIBLE CONNECTION	30 - RUBBER BUSH
15 - OUTLET GUARD	31 - OUTLET FLANGE
16 - OUTLET COUNTERFLANGE	32 - MOTOR BASE PLATE

COMEFRI reserves the right to make any dimensional design changes which are part of their improvement programme. Necessary corrections are updated on our AEOLUS PLUS selection program.

COMEFRI behält sich sämtliche Änderungen vor, die dem technischen Fortschritt dienen. Notwendige Korrekturen der Katalogdaten werden in unserem Auswahlprogramm AEOLUS PLUS berücksichtigt.

Comefri se réserve la possibilité d'apporter des modifications de dimensions sans aucun préavis ceci parce que ces informations font parties d'un programme interne de développement du produit. Les éventuelles variations et/ou corrections seront ajournés dans notre programme de sélection AEOLUS PLUS.

La COMEFRI si riserva la possibilità di apportare modifiche dimensionali senza alcun preavviso ciò in quanto parte di un programma interno di sviluppo del prodotto. Le eventuali variazioni e/o correzioni saranno aggiornate nel nostro programma di selezione AEOLUS PLUS.

Comefri SpA

Via Buja, 3
I-33010 Magnano in Riviera (UD)
Italy
Tel. +39-0432-798811
Fax +39-0432-783378
www.comefri.com
E-mail: info@comefri.com

Comefri USA, Inc

330 Bill Bryan Boulevard
Hopkinsville, KY 42240
USA
Tel. +1-270-881-1444
Fax + 1-270-889-0309
www.comefriusa.com
E-mail: sales@comefriusa.com

Comefri UK Ltd

Carters Lane, 8 Kiln Farm
Milton Keynes, MK11 3 ER
Great Britain
Tel. +44-1908-56 94 69
Fax +44-1908-56 75 66
www.comefri.com
E-mail: sales@comefri.co.uk

Comefri GmbH

Landshuter str.55
84030 Ergolding
Germany
Tel. +49-871-43070-0
Fax +49-871-43070-40
www.comefri.de
E-mail: info@comefri.de

Comefri Nordisk ApS

Mileparken, 18
DK 2740 Skovlunde
Denmark
Tel. +45-44-92 76 00
Fax +45-44-92 55 33
www.comefri.com
E-mail: mail.dk@comefri.com

Comefri France S.A.

10, Rue des Frères Lumière
69740 Genas
France
Tel. +33-4-72 79 03 80
Fax +33-4-78 90 69 73
www.comefri.com
E-mail: info@comefrifrance.fr

Comefri China Ind. Co. Ltd.

Suite 1201, North Tower, New
World Times Center, 2191
Guangyuan Rd. (E.) Guangzhou.
P.R.C.
Tel: +86 20 8773 1890/1891
Fax: +86 8773 1893
<http://www.comefrichina.com>
E-mail: sales@comefrichina.com

